

University of Wisconsin-Stevens Point

Academic Affairs

2007-08 Academic Year

BOARD OF REGENTS

PRESIDENT
UNIVERSITY OF WISCONSIN SYSTEM
Kevin P. Reilly

CHANCELLOR
Linda Bunnell

PROVOST & VICE CHANCELLOR
FOR ACADEMIC AFFAIRS
Mark A Nook

ASSOCIATE VICE CHANCELLORS
Stephen R. Bondeson, Teaching, Learning & Academic Programs
Michael P. Veum, Personnel, Budget, Grants & Summer Session

INTERNATIONAL PROGRAMS: Eric Yonke, Director

TEACHING-LEARNING RESOURCES: Kathy Davis, Director
-Tutoring-Learning Center
-University Library

UWSP Continuing Education: John Birrenkott, Interim Coordinator
-Credit & Non-Credit Programming
-Entrepreneurial Activities
-Marketing Services

COLLEGE OF FINE ARTS & COMMUNICATION: Jeffrey Morin, Dean
-Aber Suzuki Center: Dee Martz, Director
-Department of Art & Design: Rob Stolzer, Chair
-Division of Communication: James Haney, Associate Dean & Head
-Department of Music: Patricia Holland, Chair
-Department of Theatre & Dance: Gary Olsen, Chair

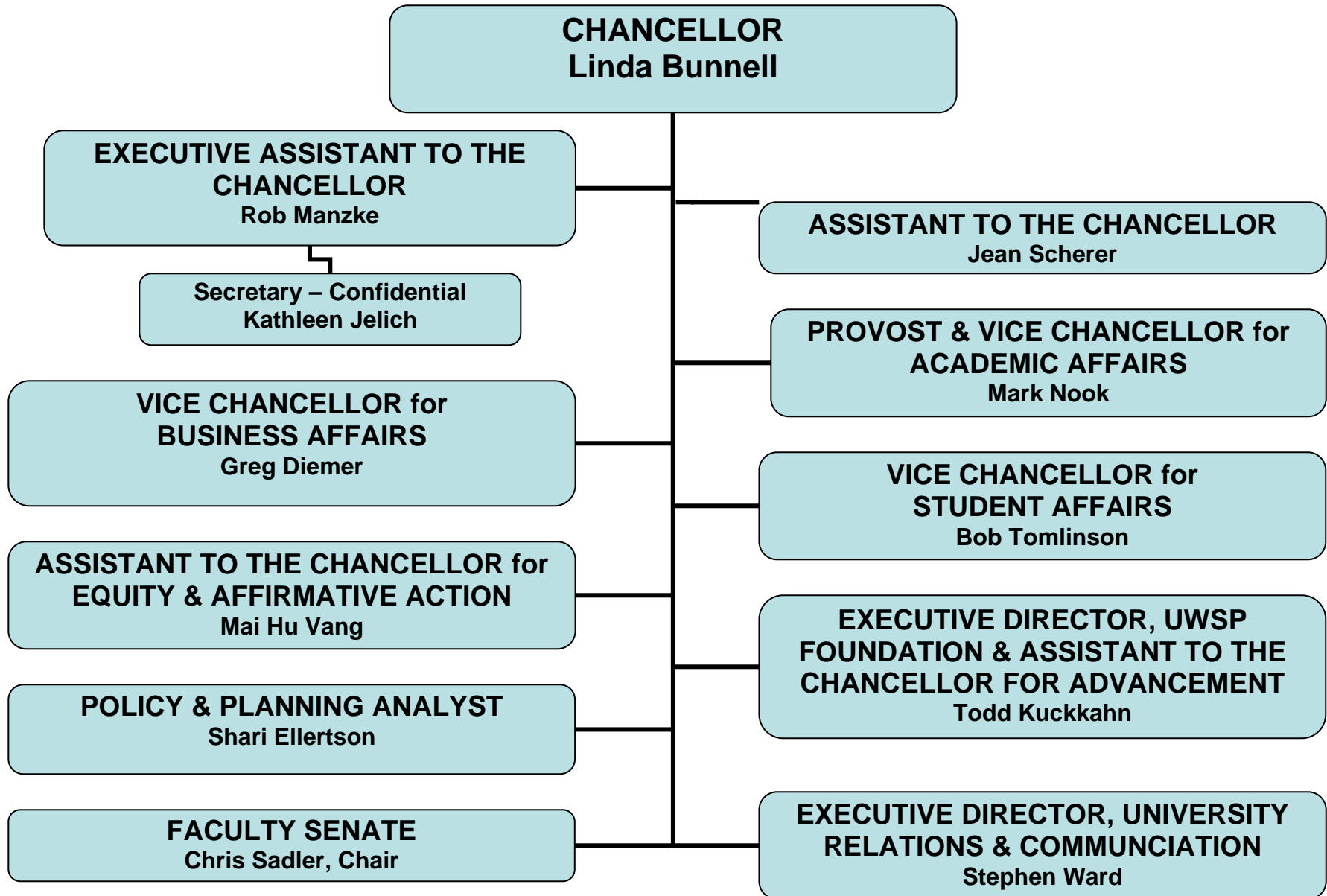
COLLEGE OF PROFESSIONAL STUDIES: Joan North, Dean
-School of Communicative Disorders: Gary Cumley, Head
-School of Education: JoAnne Katzmarek, Head
-School of Health, Exercise Science & Athletics: Fred Hebert, Head
-School of Health Promotion & Human Development: Martin Loy, Head
-Department of Health Sciences: Susan Raab, Head
-Division of Interior Architecture: Nisha Fernando, Head
-Military Science: LTC. Scott Bolstad, Chair

INFORMATION TECHNOLOGY: David Dumke, Director/CIO
-Administrative Information Systems
-Production Services
-Telephone Support Office
-Web & Media Services

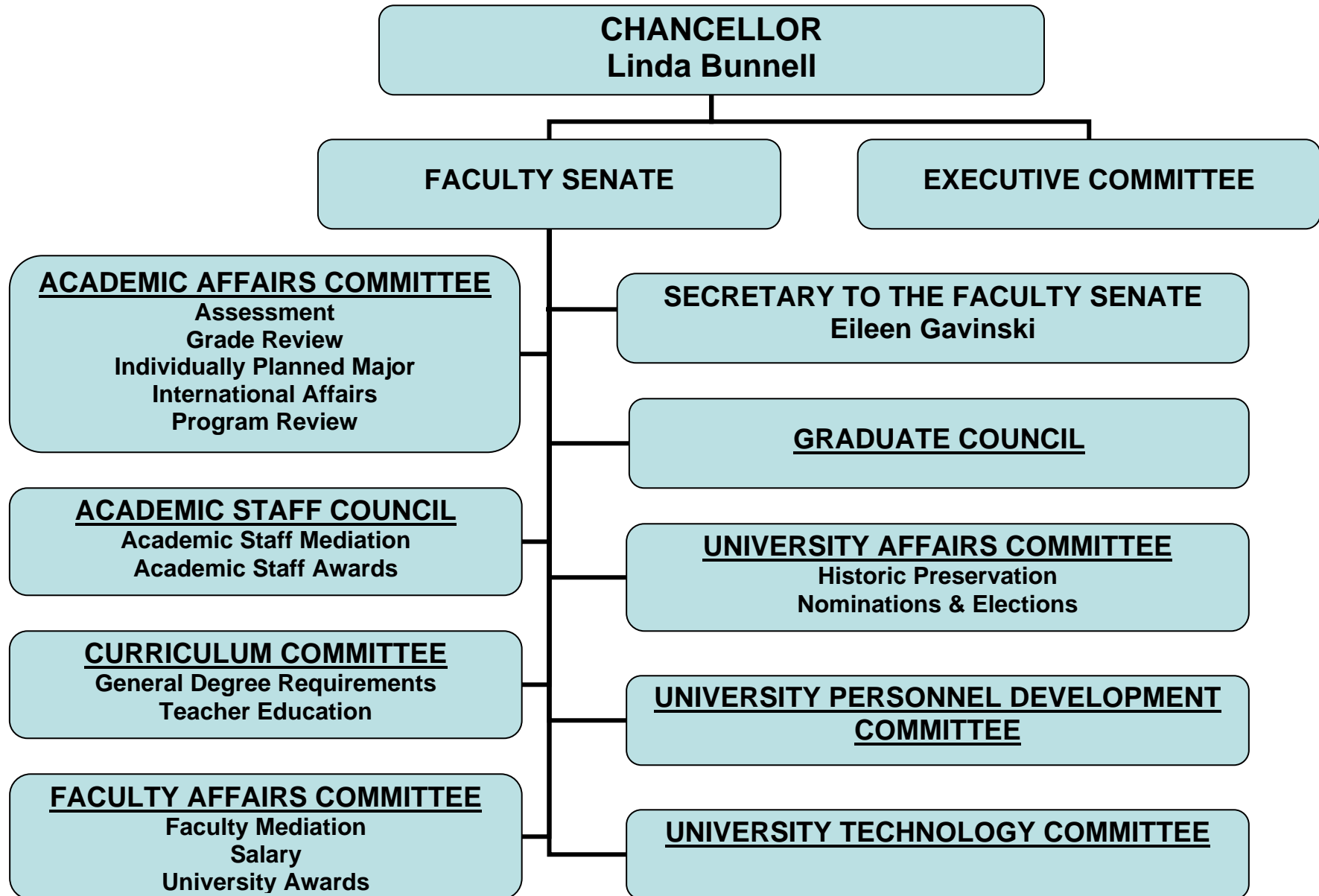
COLLEGE OF NATURAL RESOURCES: Christine Thomas, Dean
-Department of Paper Science: Gerry Ring, Chair
-Forestry Discipline
-Human Dimensions of Natural Resources Discipline
-Soils & Water Resources Discipline
-Wildlife Discipline
-Becoming an Outdoors Woman Program
-Central Wisconsin Environmental Status
-Central Wisconsin Groundwater center
-Coop Fisheries
-Global Environmental Management Education Center
-Land Use Educational Center
-National Environmental Education Center
-Schmeckle Reserve Visitor Center
-Treehaven Field Station
-Wisconsin Center for Environmental Education
-Wisconsin Lakes Partnership Program
-Wood Utilization Lab

COLLEGE OF LETTERS & SCIENCE: Lance Grahn, Dean
-Department of Biology: Chris Yahnke, Chair
-Division of Business & Economics: C.R. Marshall, Chair
-Department of Chemistry: James Brummer, Chair
-Department of Computing & New Media Technologies: Daniel Goulet, Chair
-Department of English: Michael Williams, Chair
-Department of Foreign Languages: Richard Ruppel, Chair
-Department of Geography/Geology: Keith Rice, Chair
-Department of History: Greg Summers, Chair
-Department of Mathematical Sciences: Nathan Wetzel, Chair
-Department of Philosophy: Dona Warren, Chair
-Department of Physics & Astronomy: Robert Beeken, Chair
-Department of Political Science: John Blakeman, Chair
-Department of Psychology: Padmanabhan Sudevan, Chair
-Department of Sociology: Robert Enright, Chair

UNIVERSITY OF WISCONSIN – STEVENS POINT
EXECUTIVE OFFICE
2007-08 Academic Year



**UNIVERSITY OF WISCONSIN – STEVENS POINT
FACULTY SENATE
2007-08**



UNIVERSITY OF WISCONSIN – STEVENS POINT
JULY 2007

