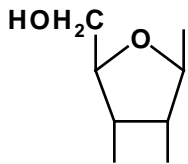
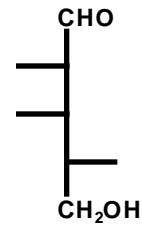
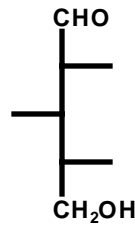
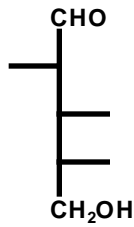
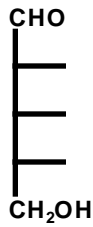
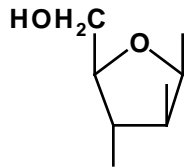


# MONOSACCHARIDE STRUCTURES

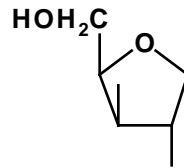
## ALDOPENTOSES



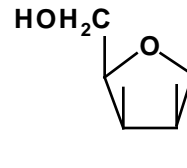
D-RIBOSE



D-ARABINOSE



D-XYLOSE



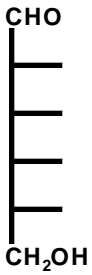
D-LYXOSE

These two shown as anomers.

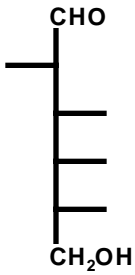
These two shown as anomers.

All shown as furanose rings.

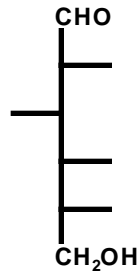
## ALDOHEXOSES



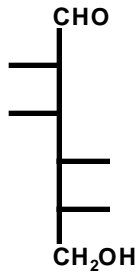
D-ALLOSE



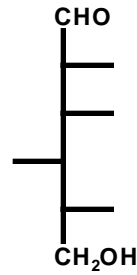
D-ALTROSE



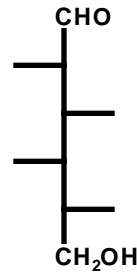
D-GLUCOSE



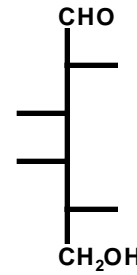
D-MANNOSE



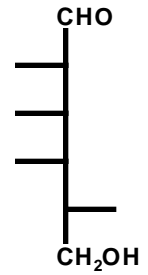
D-GULOSE



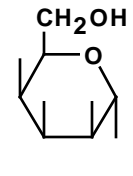
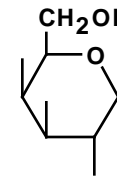
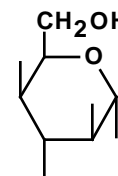
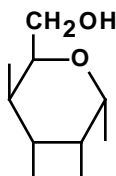
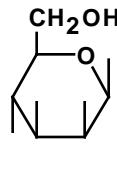
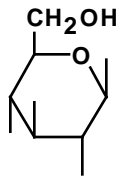
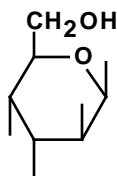
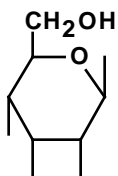
D-IDOSE



D-GALACTOSE



D-TALOSE

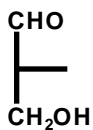


These four are all shown as the anomers.

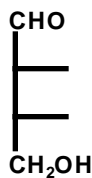
These four are all shown as the anomers.

All shown as pyranose rings.

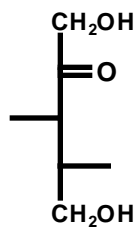
## OTHER ALDOSES



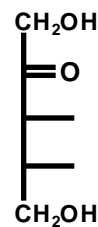
D-GLYCERALDEHYDE



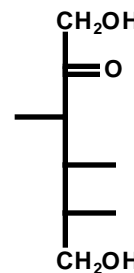
D-ERYTHROSE



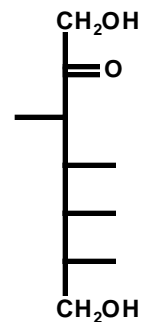
D-XYLULOSE



D-RIBULOSE



D-FRUCTOSE



D-SEDOHEPTULOSE

## SOME IMPORTANT KETOSES