

# the Alembic



## Chair's Corner

Our Meeting-in-Miniature next week has a great program. Thank you so much to the eight people who together are offering 5 talks and 5 posters. Check out the interesting range of topics (program attached) from lab safety, to analytical chemistry, to organic synthesis, to theoretical chemistry, to medical research. Then please come and support your colleagues. It is always fun to learn more about the work that our friends and colleagues are doing.

There will not be an organized dinner preceding this meeting. That is because a number of us will be very busy with last minute preparations. If you want to get together with ACS friends prior to the meeting, please make your own arrangements. There will be free snacks and beverages available in the room with the poster presentations.

Congratulations to section member Dr. Mike Zach of UWSP. He has been named WiSys Innovation Scholar of the year, a prestigious UW system-wide honor. Mike and his nanotechnology work are being honored with a reception hosted by the UWSP Chancellor on Tuesday afternoon shortly before our Meeting-in-Miniature. The conflict in time is unfortunate for us but we are very pleased for Mike. In order to accommodate UWSP chem faculty who may want to attend both events, we are starting our Meeting-in-Miniature a half hour later than we have in the past.

A ballot for election of section officers is included in this Alembic. Please note that the nominating committee (Dave Lewis and I) has not located a person willing to run for the office of Chair-Elect. Maybe you can help locate our 2010 chair by writing in

the name of someone you think is able and might be willing. We will contact all write-ins to determine if they are willing. Even if your write-in has already been asked, maybe your write-in vote of support will persuade him or her that he or she is right for the job.

The process of searching for a chair-elect candidate has made it abundantly clear that we are not adequately involving new members, especially in industry. That is unfortunate because the interaction between industry and academic members is a significant part of what has made this section vibrant and beneficial in the past. The social and networking benefits can be great. I personally moved from a paper industry career to academia because of my relationships within the Central Wisconsin Section. If you are a new member who has not gotten involved please come to a few meetings. We are a very social bunch and we would love to have your participation.

This is Tom Zamis's last edition of the Alembic. (We are not planning a December meeting or newsletter.) Please thank Tom for the marvelous job that he has done for so many years. It's been great working with you, Tom.

**Dave Thiel**

Visit the new ACS web site at:  
[portal.acs.org/portal/acs/corg/content](http://portal.acs.org/portal/acs/corg/content)

### ACS - CWS Mini-Directory

#### Chair

Dave Thiel  
 911 Craig Ct.  
 Port Edwards, WI 54469  
 phone (home) 887-4338  
 phone (office) 346-3714  
 email dthiel@uwsp.edu

#### Chair-Elect

Dave Lewis

#### Secretary - Treasurer

Tip Randall

#### Councilor

C. Marvin Lang

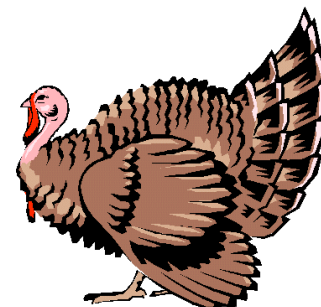
#### Alternate Councilor

Dave Lewis

#### Newsletter Editor

Tom Zamis  
 Dept. of Chemistry, UW-SP  
 phone (715) 346-3258 (office)  
 email tzamis@uwsp.edu

**ACS-CWS Web Page**  
[www.uwsp.edu/chemistry/acscws/](http://www.uwsp.edu/chemistry/acscws/)





American Chemical Society

Central Wisconsin Section



**“ACS - Central Wisconsin Section -  
9<sup>th</sup> Meeting-in-Miniature”**

**Tuesday, November 11, 2008  
7:00 - 9:00 PM**

**UW - Marshfield/Wood County, Marshfield WI  
Aldo Leopold Science Building**

**Program**

**SESSION I:** Room 127, 7:00 p.m.

1. Gina Macek and Dave Lewis, UWEC, – “Is it Time to Change the Oil Yet?”
2. Bill Penker, Clark County Emergency Planning – “Response to Mercury Spills at Four Public High Schools”

**POSTER PRESENTATIONS & Refreshments,** Room 140, approx. 7:40

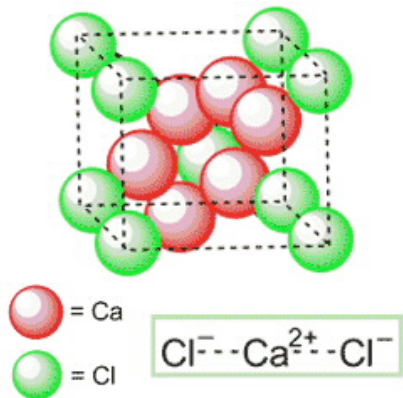
- Tom Zamis, UWSP – “Environmental Factors Affecting Restriction Fragment Length Polymorphism Analysis”
- Dan Hoefner, Marshfield Clinic – “Comparative Analysis of Fecal Fat by Supercritical Fluid Extraction and Gravimetry”
- Jacob Fenhaus, Wis. Valley Lutheran High School – “Chemical Case Study Redux- Lessons Lost”
- Elizabeth Raupach, Kyle Kopidlansky and Dave Lewis, UWEC – “Synthesis of Fluorescent Naphthalamides Carrying a Carbon Substituent at the 3- Position”
- Dan Dissing, UWSP – “Electrodeposition of Tungsten Nanowires”

**SESSION II:** Room 127, approx. 8:00 p.m.

1. Dave Seley, UWSP - “Lithographically Patterned Nanowire Electrodeposition on Conductive Ultrananocrystalline Diamond”
2. Dan Hoefner, Marshfield Clinic – “Cardio Vascular Disease Risk Assessment”
  - Jason D’Acchioli, UWSP – “Piano stools and slipped discs: The behavior of  $[(\eta^5\text{-Indenyl})\text{Ru}(\text{CO})_3]^+$  “

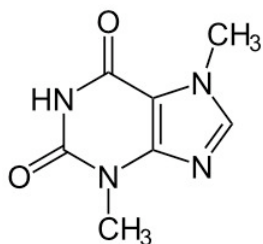
UW-Marshfield/Wood County is located on the west side of town, 2000 W. Fifth St. From Hwy. 97 (North Central Ave.) go to 5th Street, turn west. Once on 5th Street, continue 20 blocks to campus.

## Molecules of the Month



**Calcium chloride** (CaCl<sub>2</sub>) dissolves exothermally in water and is highly hygroscopic. These properties make it useful for applications such as removing water from gases and liquids, melting ice on roadways, maintaining a liquid layer on road surfaces for dust control, and preparing aqueous solutions with low freezing temperatures.

\*\*\*\*\*



**Theobromine**, also known as xanthose, is a bitter alkaloid of the cacao plant, and is therefore found in chocolate. Despite its name, the compound contains no bromine — theobromine is derived from Theobroma, the name of the genus of the cacao tree, (which itself is made up of the Greek roots theo ("God") and bromia ("food"), meaning "food of the gods") with the suffix -ine given to alkaloids and other basic nitrogen-containing compounds. Theobromine is the primary alkaloid found in cocoa and chocolate; chocolate contains 0.5-2.7% theobromine. It can also be found in small amounts in the kola nut (1.0-2.5%), the guarana berry, and the tea plant.

\*\*\*\*\*

### What Are ACS Local Sections?

Local sections let you connect with other chemists and chemical engineers in your geographic area, participate locally in programs to enhance your professional development, and contribute to the public's understanding of chemistry in your community.

The Committee on Local Section Activities, an ACS committee charged with enhancing the success of local sections, is focusing on six areas to help local sections remain strong:

### Community Building

- \* Community Outreach
- \* National Chemistry Week, Chemists Celebrate Earth Day, and other outreach programs and volunteer opportunities

### Mentoring and Leadership Development

- \* Leadership Development System
- \* Younger Chemists
- \* Silver Circle
- \* Local Section Migrant Program

### Professional Development

- \* Career Management and Development
- \* Diversity Programs
- \* Younger Chemists
- \* Women Chemists

### Continuing Education

- \* Continuing Education - Short courses offered at different locations throughout the country and online

### Advocacy for Chemistry

- \* Legislative and Government Affairs
- \* Press Room

### Public Outreach

- \* Community Outreach - National Chemistry Week, Chemists Celebrate Earth Day, and other outreach programs and volunteer opportunities
- \* Science for Kids - Hands on activities for children

### Learn More about Local Sections

Have questions and can't find the answers? Send us an e-mail and one of our staff members will promptly return your inquiry.

[olsa@acs.org](mailto:olsa@acs.org)

---

## 2008 Section Officers Ballot

Mark the box next to your selection for each office  
Return the completed ballot by December 12, 2008 to:

Dave Thiel  
Department of Chemistry  
University of Wisconsin-Stevens Point  
Stevens Point, WI 54481

Please indicate your choice by marking the box to the left of the candidate's or write-in's name.

(To date no one has agreed to be a candidate for the chair-elect position. Please write in the name of a member that you think would be able and willing to serve in this position. All write-ins will be contacted to determine their willingness to serve. If more than one write-in is willing to serve, the one with the most votes will become chair-elect.)

### **Chair Elect 2009 Chair 2010 Past Chair 2011**

write-in \_\_\_\_\_

### **Secretary/Treasurer 2009**

Tipton Randall  write-in \_\_\_\_\_

### **Councilor 2009**

Marv Lang  write-in \_\_\_\_\_

### **Alternate Councilor 2009**

Dave Lewis  write-in \_\_\_\_\_