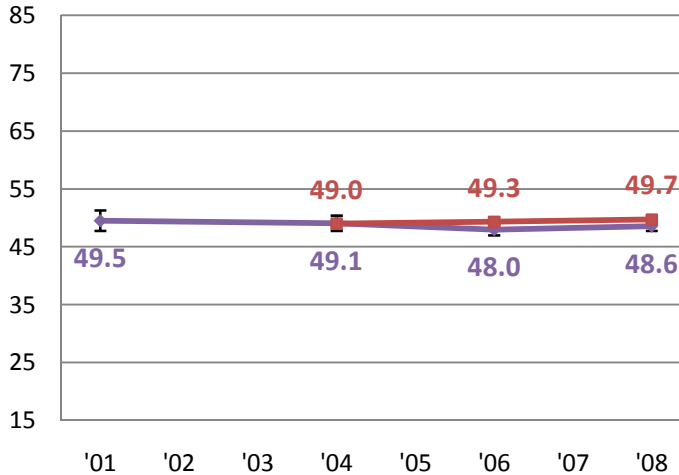
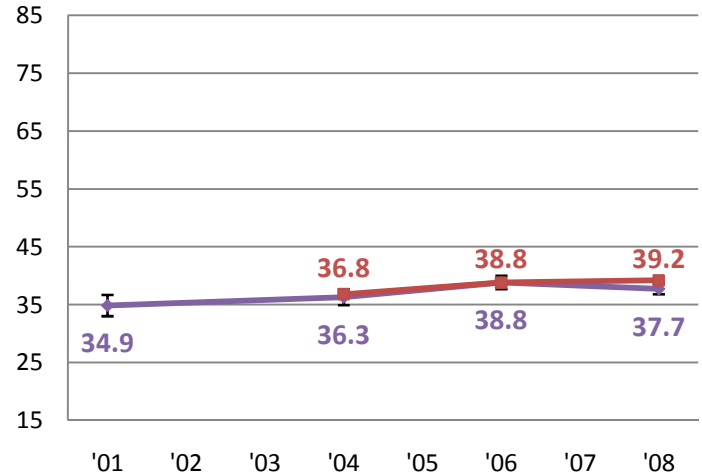


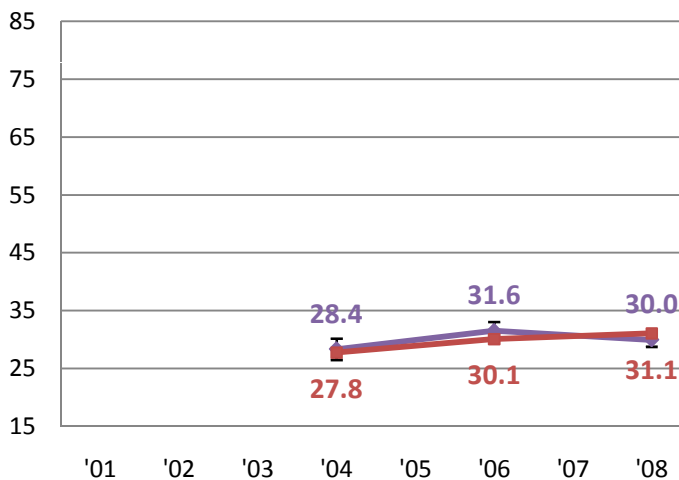
Level of Academic Challenge (LAC)



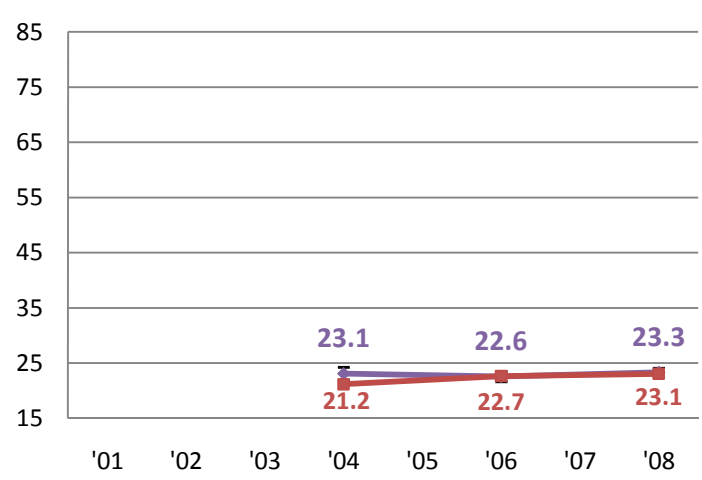
Active and Collaborative Learning (ACL)



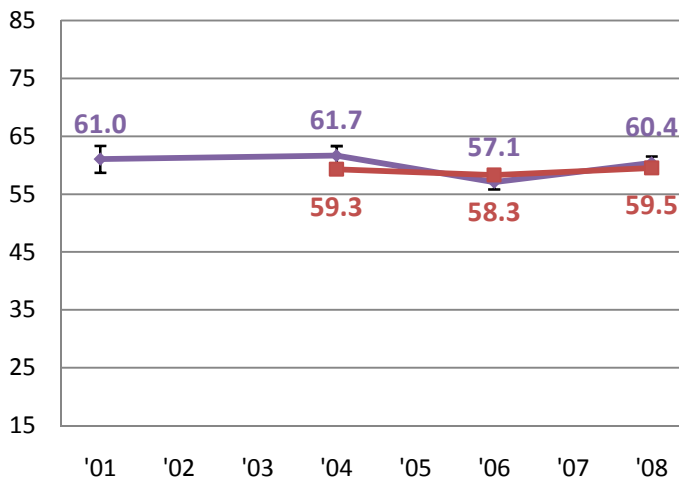
Student-Faculty Interaction (SFI)^b



Enriching Educational Experiences (EEE)^c



Supportive Campus Environment (SCE)



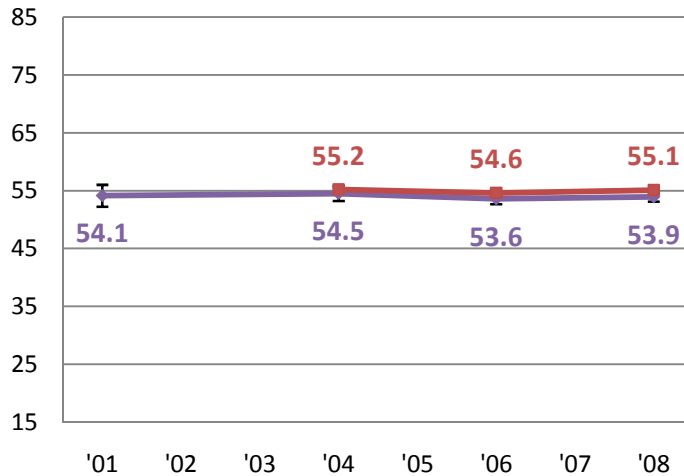
—◆— UWSP —■— UW Comps

Notes:

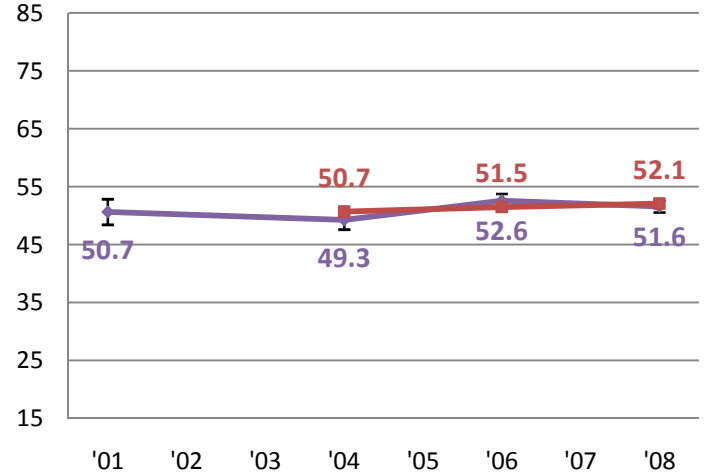
- Recalculated benchmark scores are charted for all years of participation since 2001. See page 7 for detailed statistics. For more information and recommendations for analyzing multi-year NSSE data, consult the *Multi-Year Data Analysis Guide*: www.nsse.iub.edu/pdf/2008_Institutional_Report/Multiyear_Data_Guide.pdf.
- Due to a change to the benchmark calculation in 2004, 'SFI' data are charted on this page only for data in 2004 and after.
- 2001-2003 'EEE' scores are not provided because these scores are not comparable with those of later years; response options for several 'EEE' items were altered in 2004.

Seniors

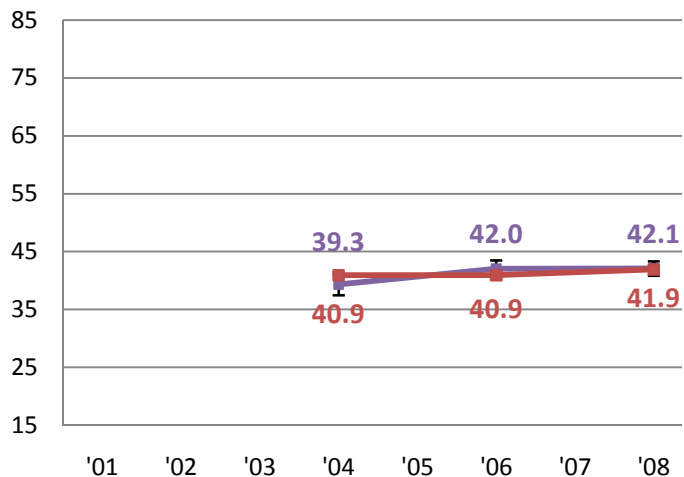
Level of Academic Challenge (LAC)



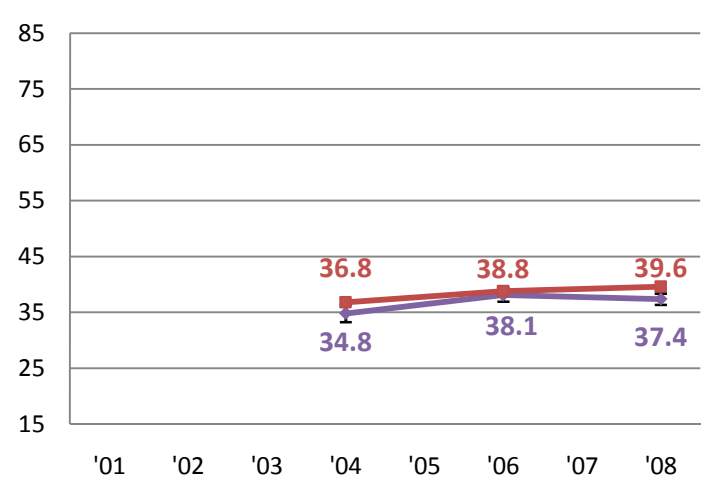
Active and Collaborative Learning (ACL)



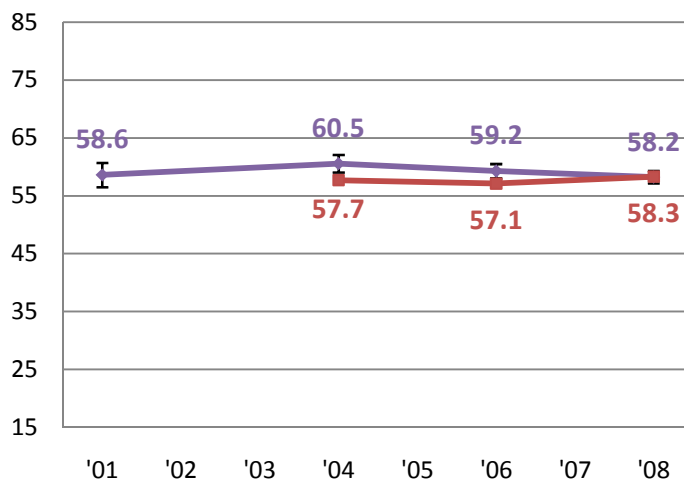
Student-Faculty Interaction (SFI)^b



Enriching Educational Experiences (EEE)^c



Supportive Campus Environment (SCE)



—◆— UWSP —■— UWComps

Notes:

- Recalculated benchmark scores are charted for all years of participation since 2001. See page 7 for detailed statistics. For more information and recommendations for analyzing multi-year NSSE data, consult the *Multi-Year Data Analysis Guide*: www.nsse.iub.edu/pdf/2008_Institutional_Report/Multiyear_Data_Guide.pdf.
- Due to a change to the benchmark calculation in 2004, 'SFI' data are charted on this page only for data in 2004 and after.
- 2001-2003 'EEE' scores are not provided because these scores are not comparable with those of later years; response options for several 'EEE' items were altered in 2004.